



# Caledonian

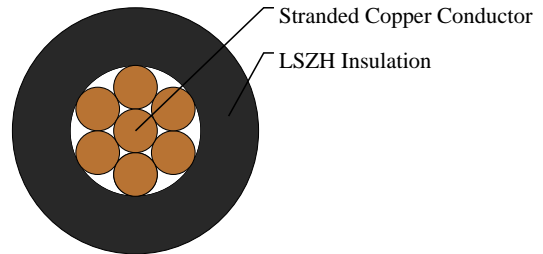
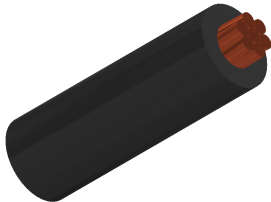
## Railway Cables

www.caledonian-cables.com

marketing@caledonian-cables.com

### 450/750V LSZH Single Core Conduit Wires to EME-SP-14-026

RF14026-ES07Z-U(AS)-450/750V-1G1.5S



### APPLICATIONS

Single core LSZH conduit wire.

### STANDARDS

EME SP 14 026 (LUL version of BS7211)

UNE 211002

### VOLTAGE RATING

450/750V

### CABLE CONSTRUCTION

Conductors: Stranded plain copper conductors to IEC 60228 class 2 or 5.

Insulation: LSZH.

### PHYSICAL AND THERMAL PROPERTIES

Minimum Bending Radius: 8 x OD

Operating Temperatures: -25°C to +85°C (during operation); -10°C to +70°C (during installation)

### DIMENSION AND PARAMETERS

No. of Cores × Cross-sectional Area	No./Nominal Diameter of Strands	Nominal Insulation Thickness	Nom. Overall Diameter	Approx. Weight	Max. DC Resistance at 20°C
No. × mm <sup>2</sup>	no./mm	mm	mm	kg/km	Ω/km
1 x 1.5	7/0.53	0.7	3	22	12.1



Fire Retardant  
NF C32-070-2.2(C1)  
IEC60332-3-24/EN50266-2-4



Flame Retardant  
NF C32-070-2.1(C2)  
IEC60332-1-2/EN50265-2-1



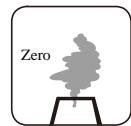
Low Corrosivity  
IEC60754-2/EN50267-2-2/3  
NF C32-074/NF C20-453



Low Smoke Emission  
IEC 61034-2 / EN 50268-2  
NF C32-073/NF C 20-902



Low Toxicity



Zero Halogen  
IEC 60754-1/EN 50267-2-1  
NF C20-454